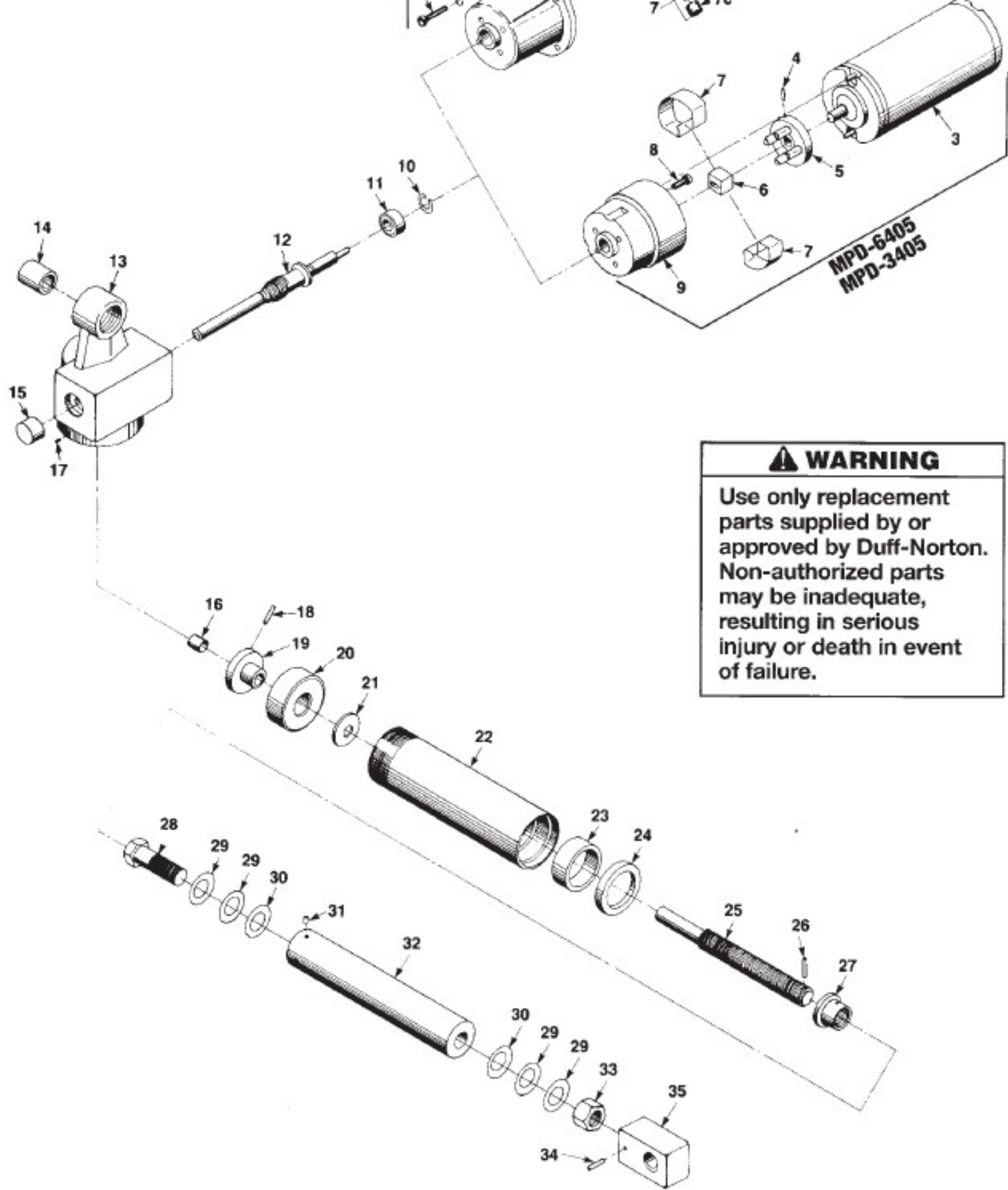


Index	Part Name
1	Screw
2	Lock Washer
3	Motor
3	Motor (High Speed)
4	Pin (Coupling)
5	Coupling
6	Brake Cam
6	Ball Housing
7	Spring
7a	Set Screw
7b	Compression Screw
7c	Roller Ball
8	Screw
9	Motor Adaptor
10	Retaining Ring
11	Bearing
12	Pinion
13	Housing St'd
13	Housing 90°
13	Housing Th'd
14	Bushing (Clevis)
15	Bushing
16	Bushing
17	Set Screw
18	Pin (Gear)
19	Gear
20	Bearing
21	Washer
22	Outer Tube
23	Guide Bushing
24	Seal
25	Screw
26	Pin (Stop)
27	Nut
28	Hex Head Cap Screw
29	Belleville Spring Washer
30	Thrust Washer
31	Pin (Nut)
32	Translating Tube
33	Hex Lock Nut
34	Pin (Clevis)
35	Clevis End
36	Damper



WARNING

Use only replacement parts supplied by or approved by Duff-Norton. Non-authorized parts may be inadequate, resulting in serious injury or death in event of failure.